

Room ID: R11M

Room Description:

MIL-STD-TEST ENCLOSURE
ANECHOIC ABSORBER LINED

Room Dimensions:

6.1m x 4.57m x 3.05m
or
20ft. x 15ft. x 10ft. (see Figure – 3 below)

Room Construction:

2 Layers 32oz. Copper
2 Layers Silicon Steel

Ground Plane Dimensions:

4.88m x 1.68m x .78mm
or
16ft. x 5.5ft. x 0.031in. (see Figure – 3 below)

Ground Plane Bonding:

Continuous Solder

Distance from Waveguide to Front of Ground Plane:

1.248m or 49.13in.

Test room filtering:

3 - 50 Amp DC filters
115VAC 400Hz 3Phase 30 Amp
115VAC 60Hz 3Phase 50 Amp
115VAC 60Hz 1Phase 15 Amp outlets

Note: Other power arrangements are available upon request.

Room ID: R11P

Room Description:

MIL-STD MONITOR ENCLOSURE

Room Dimensions:

6.1m x 3.05m x 2.44m or 20ft. x 10ft. x 8ft. (see Figure – 3 below)

Room Construction:

1 Layer Bronze Screen

1 Layer 3oz. Copper

Ground Plane Dimensions:

3.66m x .76m x .78mm or 12ft. x 2.5ft. x 0.031in. (see Figure – 3 below)

Ground Plane Bonding:

Copper Straps

Distance from Waveguide to Front of Ground Plane:

.84m or 32.9in.

Monitor room filtering:

3 each 30 Amp DC filters

115VAC 60Hz 1Phase 15 Amp outlets

480VAC 60Hz 3Phase 60 Amp

Monitor room could also be configured with filtered power:

240VAC 60Hz 3Phase 30 Amp

208VAC 60Hz 3Phase 30 Amp

208VAC 400Hz 3Phase 30 Amp

Note: Other power arrangements are available upon request.

General cabling considerations:

Mil Std Tests:

-Power and interconnect leads need to be 2 meters in length within 10cm of the front of the ground plane. (Ref 461E section 4.3.8.6.1 & 4.3.8.6.2)

DO-160 Tests:

-Power leads need to be 1 meter in length within 10 cm of the front of the ground plane.

-Interconnect leads need to have 3.3 meters exposed and at least 1 meter within 10 cm of the front of the ground plane. (Ref DO-160D Section 20.3)

Note:

Please note that distance from the front edge of the monitor room ground plane and the test room ground plane is a full 10 feet. Plan cable lengths accordingly.



Figure - 1: Room 11M (Test Room)



Figure - 2: Room 11P (Monitor Room)

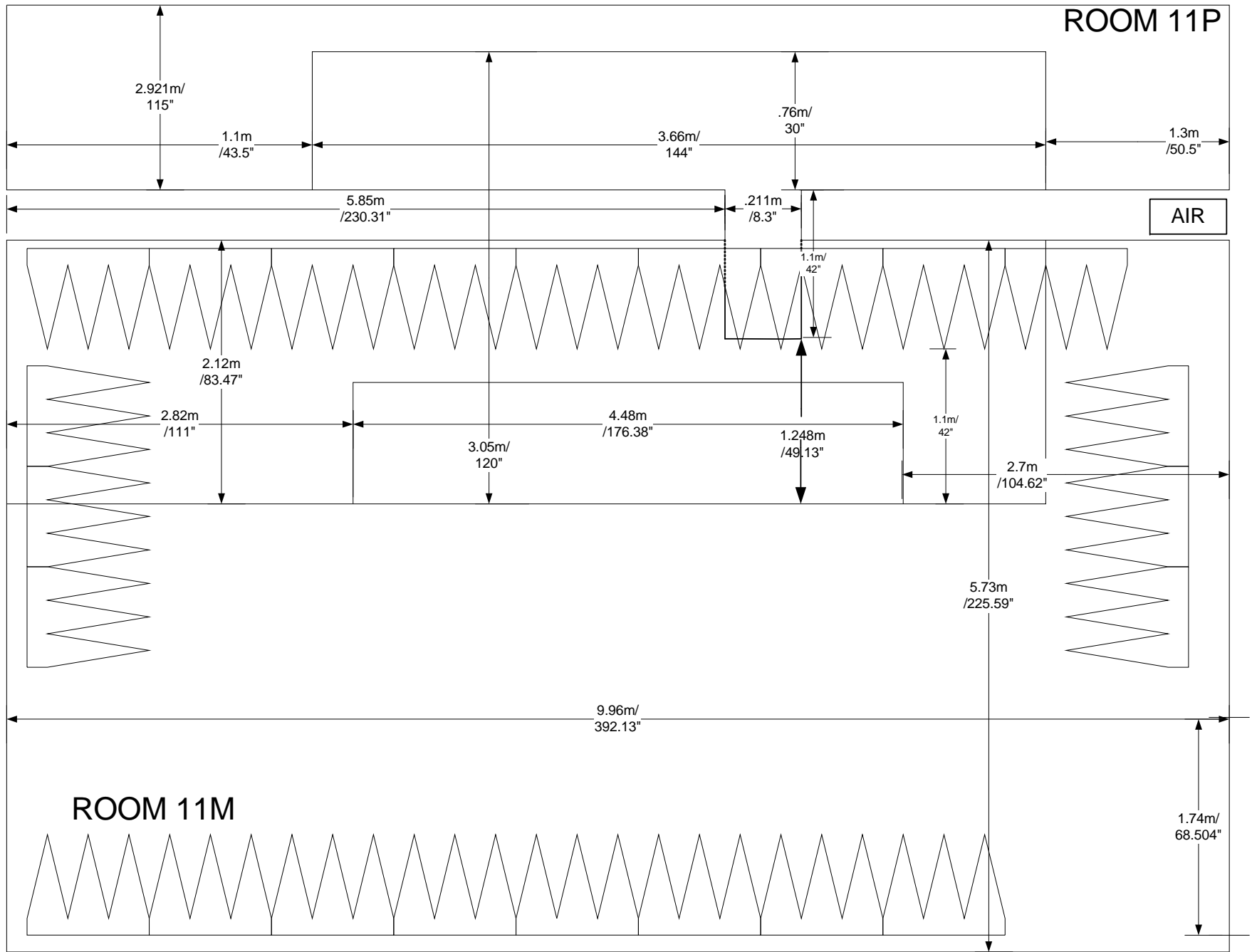


Figure - 3: Rooms 11M and 11P

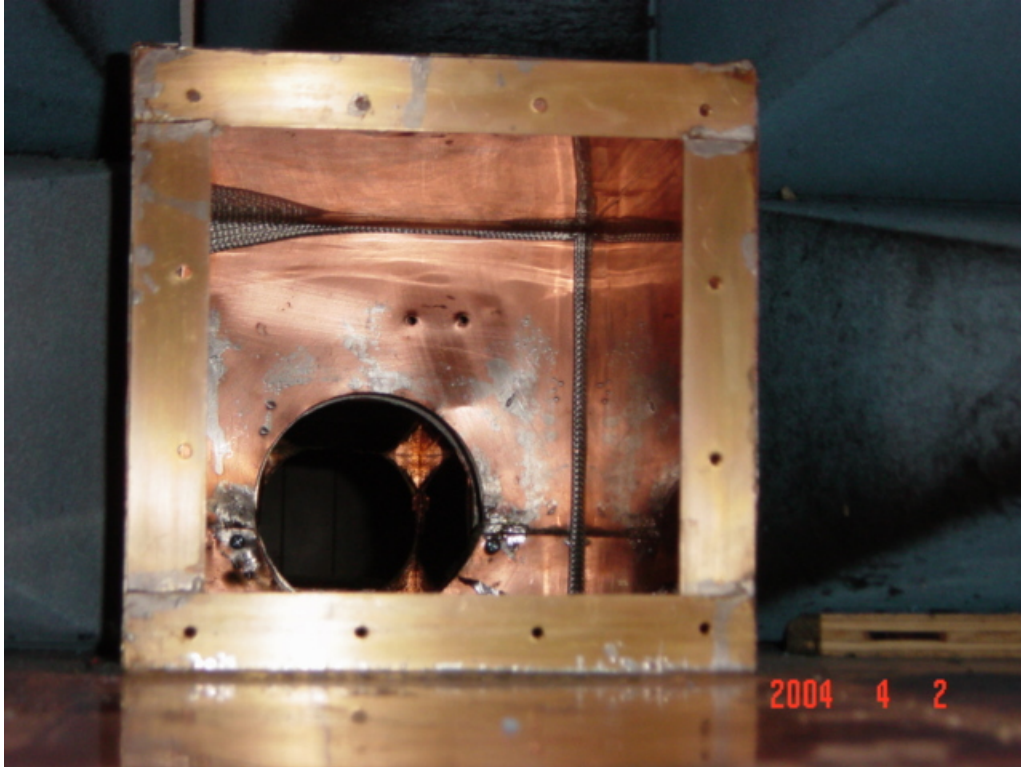


Figure - 4: Room 11M Waveguide Mount (Test Room)



Figure - 5: Room 11P Waveguide Opening (Monitor Room)

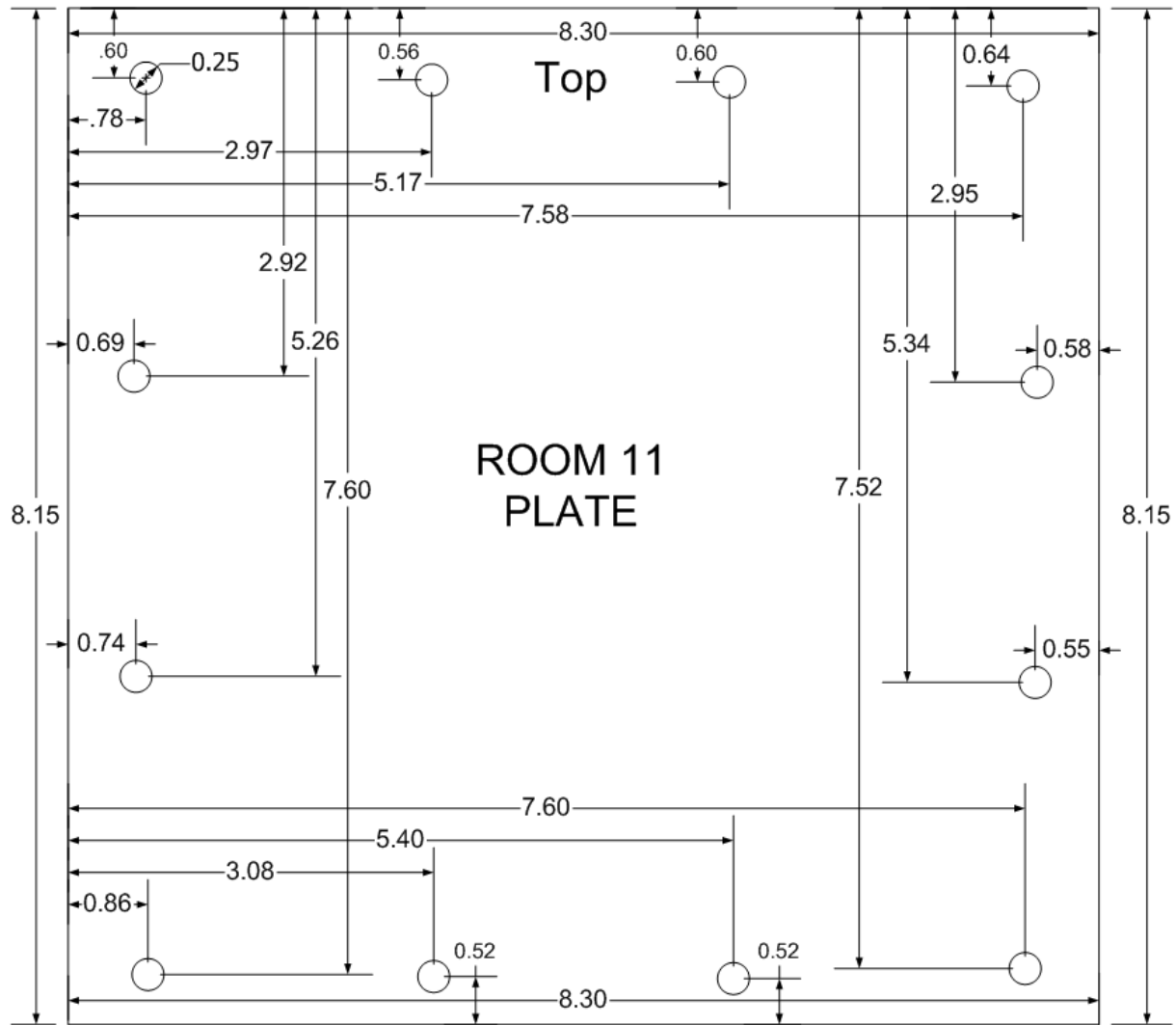


Figure - 6: Room 11M (Test Room) Waveguide Plate w/ Dimensions



Figure - 7: Room 11M (Test Room) Outer Mounting Plate (View from outside chamber)

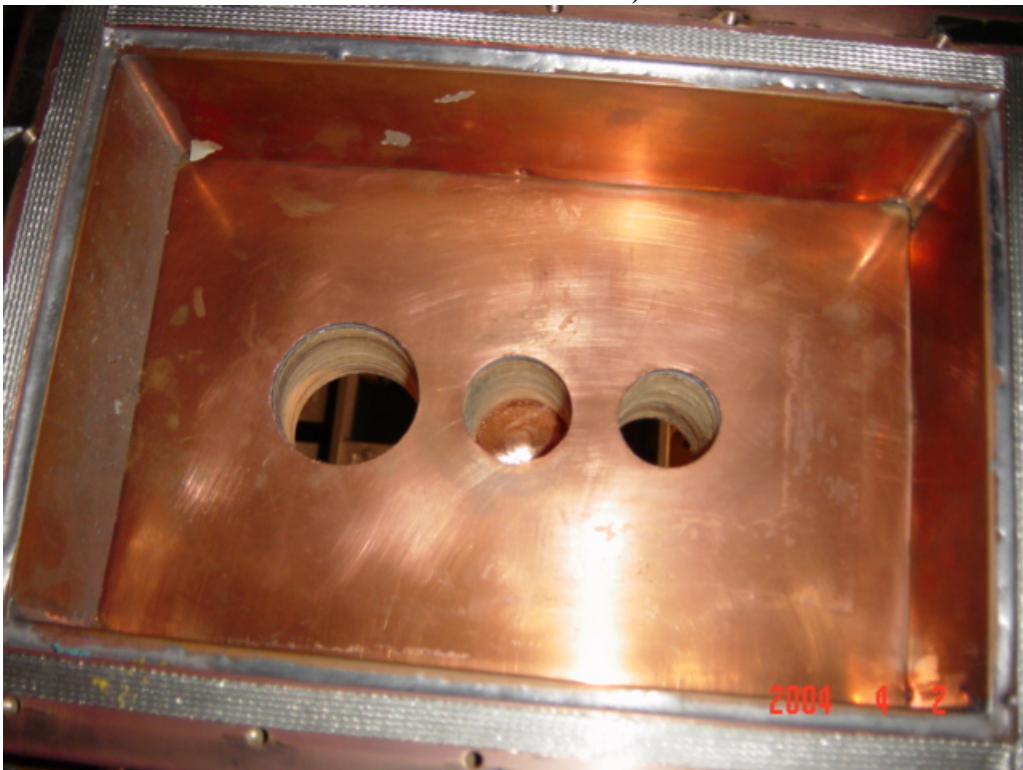


Figure - 8: Room 11M (Test Room) Outer Mounting Plate (View from inside chamber)

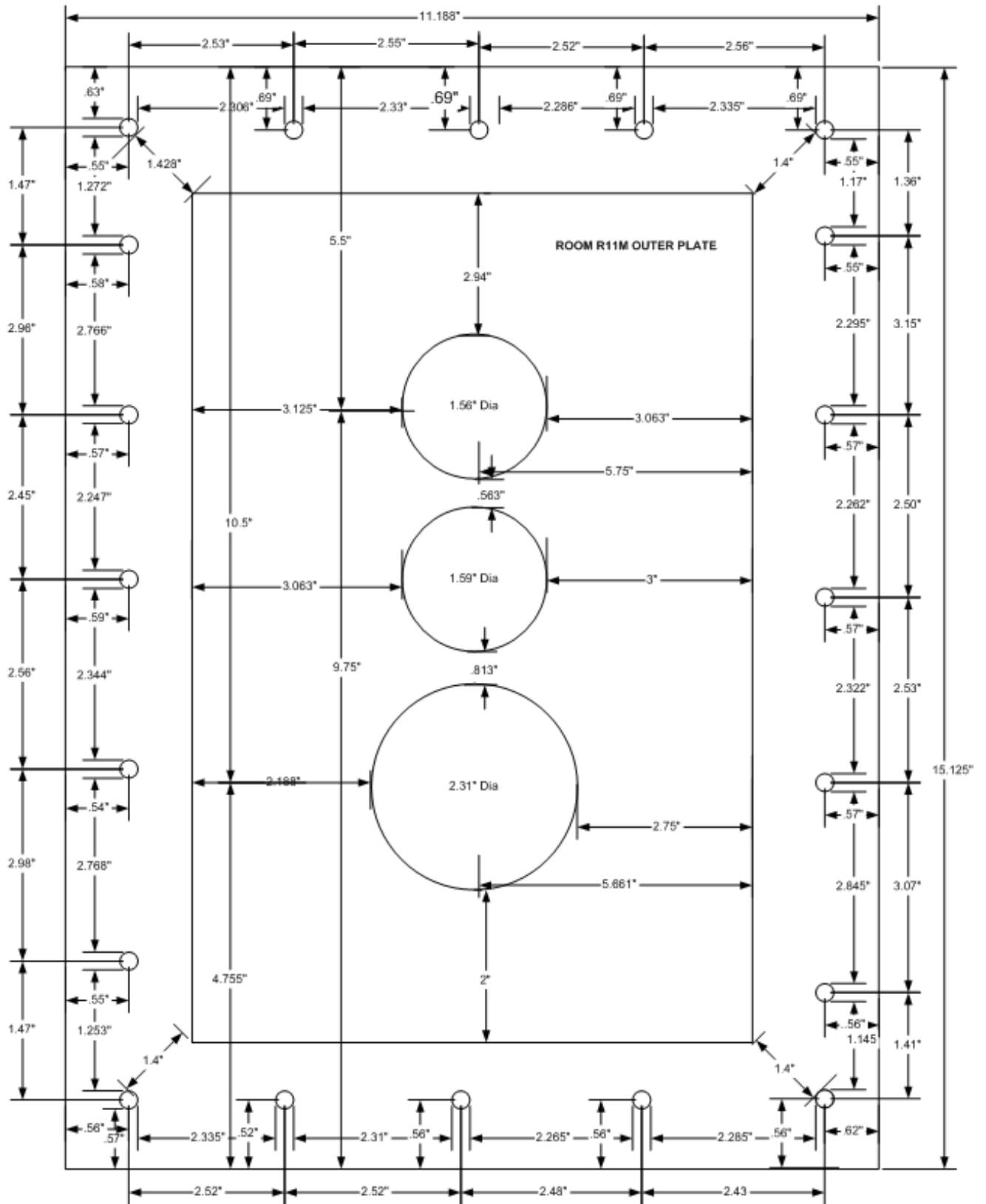


Figure - 9: Room 11M (Test Room) Outer Mounting Plate Dimensions